

LA VERNE GENERAL PLAN UPDATE VISIONING WORKSHOPS SUMMARY REPORT

Fall 2017



CITY OF LA VERNE
GENERAL PLAN UPDATE



De Novo Planning Group

A Land Use Planning, Design, and Environmental Firm

INTRODUCTION

The City of La Verne initiated their General Plan Update process in June of 2017 and simultaneously began a multifaceted outreach program to engage community members. The outreach program for this project is inclusive, educational, and designed to facilitate a meaningful conversation with the La Verne community about the issues and opportunities that are most important to them. The objectives established for the comprehensive outreach program are to:

- Educate the public on the City's history, existing conditions, socioeconomic trends, and fiscal health
- Develop a long-term vision
- Build capacity for future public outreach and education
- Engage key stakeholders to perpetuate long-term involvement
- Engage a broad spectrum of the City, particularly those who are typically silent
- Raise the profile of the General Plan and establish a greater connection to current planning issues

The General Plan update effort will involve numerous opportunities for the public to learn about and provide their input, including traditional in-person workshops and open houses and online surveys and forums. In addition, the City is in the process of establishing a General Plan Advisory Committee which will be tasked with providing input and guidance on policy direction in the General Plan. This Summary Report memorializes what was discussed at three Visioning Workshops held throughout the Fall of 2017. Additional summaries will be prepared as other outreach programs are completed as part of this project.

ADVERTISEMENTS

All three Visioning Workshops were advertised on the project website (www.laverne.generalplan.org), in the La Verne City Manager Monthly Newsletter, and via social media platforms including NextDoor and Facebook. Additionally, flyers were posted at City Hall and at key locations throughout the community. In advance of the third Visioning Workshop (held in November), bilingual event flyers (in English and Spanish) were sent home with Bonita Unified School District students. Finally, individuals that signed-up to receive notifications on the project website and/or provided their email address at City Hall or previous Visioning Workshops received personal electronic invitations to subsequent meetings.

VISIONING WORKSHOP SUMMARY

In the Fall of 2017 the City hosted a series of three Visioning Workshops to begin its conversation with the community regarding the ongoing General Plan Update. Approximately 100 people attended some or all of the Workshops. All three Workshops included an overview of the General Plan project, including why the City is updating its General Plan, topics the General Plan is required to address, and the project schedule. Each Workshop addressed different topics and individual and group activities were completed that helped participants communicate their ideas to City Staff and the consultant team. Copies of the presentations for each Workshop are available on the project website. The program and results for each Workshop are described below.

Visioning Workshop #1 (9/26/17): Vision, Assets, and Challenges

The first General Plan Visioning Workshop was held on Tuesday September 26th, 2017 at the La Verne City Council Chambers. Approximately 40 individuals attended this Workshop. Following a brief presentation on the General Plan Update, the consultant team facilitated two activities.

Activity: Assets, Challenges, and Vision Post-It Note

The first activity was an individual exercise. Meeting attendees were provided stacks of blank Post-It notes and asked to write-down what they think are La Verne's biggest assets and challenges along with their vision for the future of La Verne. The results are summarized by topic area on the following pages. Questioned posed to the group for their consideration included:

- What do you like most about La Verne?
- What should stay the same?
- What are your main concerns as La Verne looks to the future?
- What needs to change?
- What three things should La Verne accomplish in the next 20 years?

Topic Area	Assets	Vision	Challenges
Community Culture	<ul style="list-style-type: none"> • Safe environment • Clean • City employees provide help – attitude is excellent • Efficient police, fire department, personnel • Schools • Good neighborhood • Police and fire • School district • Small town “Mayberry” feel • Many “face to face” relationships • University of La Verne • Still has small town feel • I’ve lived here all my life, it’s home! • Safe, beautiful • Small town atmosphere • Family oriented • Safe and secure environment • Small town atmosphere • Friendly caring groups • Sense of community • Sense of caring • Quiet • Safe • Clean • Mayor very approachable • Wide distribution of ages in population • Small town atmosphere • Not much room for growth • Low crime • Great community i.e. events, activities, opportunities • Small community • Safe and quiet • Small town community • Safety • Staff • Small town feel 	<ul style="list-style-type: none"> • Keep small town feel • By 2040 would hope for beautification not decay • Focus on historical parts of La Verne • Keep La Verne “charming” • More community events • Retain small town virtues • Unify community • More diverse population makeup • Better connections between City and ULV activity-wise • Schools • Keep fire department with the City 	<ul style="list-style-type: none"> • Cultural activities • Keeping small town atmosphere • Protect citizens peace of mind and property values • Maintaining city size • We don’t think of La Verne as a destination i.e. Claremont Village, Pasadena Old Town, Ranch Victoria Gardens • Confined demographic • Protecting our city from former prison releases • Providing for an aging population • Maintaining the small-town aspect • All business/restaurants signs will be in English (“will be” vs. “should be”); we have cities in southern California where you will not see in English
Mobility	<ul style="list-style-type: none"> • Freeway accessibility • Nearness and accessibility to transportation • Accessible public transportation 	<ul style="list-style-type: none"> • Bike paths for kids to school and road cycling through the community • Bike lanes on Bonita 	<ul style="list-style-type: none"> • Freeway traffic noise • Traffic on Foothill • Congestion on White and Bonita area – need to divert traffic somehow

Topic Area	Assets	Vision	Challenges
		<ul style="list-style-type: none"> • Small bus service to bring residents to restaurants and businesses • Provide handicap parking downtown • City internal traffic issues • Bike lanes • Connect Old Town to Gold Line – make La Verne a Gold Line destination 	<ul style="list-style-type: none"> • Uncontrolled growth in nearby cities pressure our streets • Gold Line impact
Housing		<ul style="list-style-type: none"> • Keep mobile home parks in place • Affordable housing 	<ul style="list-style-type: none"> • Affordable housing for seniors on fixed incomes • Multiple family dwelling, zoning and impact of more people • Northward growth • Maintaining senior living facilities i.e. mobile home parks • Stop halfway houses in the community for released criminals • Affordable homes for people who work in La Verne, “entry-level” housing • Casitas La Verne displacement threat
Open Space	<ul style="list-style-type: none"> • Close proximity to open space/recreation • Against foothills • Parks (well kept) and tree-lined streets • Proximity to mountains and beach • Use of parks • Foothills canyon and wildlife • Trees • Parks for families 	<ul style="list-style-type: none"> • City park east of White/Fruit • Better management of available open space foothills • Keep hills as they are i.e. no northward growth • Retain citrus groves • Keep parks (not overcrowded) • Continued landscaping 	<ul style="list-style-type: none"> • Any new gated communities must not be fully fenced cutting off wildlife migration
Sustainability		<ul style="list-style-type: none"> • Encourage environmentally friendly development • Encourage solar energy use and provide electric charging stations • Cap development growth • Safety for MHP sustainability 	<ul style="list-style-type: none"> • “Throw away” advertising circulars • Continuing drought

Topic Area	Assets	Vision	Challenges
Economic Development	<ul style="list-style-type: none"> • Access to shopping, education, and recreation • Old Town area 	<ul style="list-style-type: none"> • More dining, retail, shopping – eliminate fast food establishments • Community better by keeping discount stores to a minimum • No empty retail buildings • A nice steakhouse • Urgent care or medical care availability • More restaurants • Nice shopping area with parking • More American food restaurants • Expand career opportunities • More restaurants downtown so we stay here and don't have to drive far 	<ul style="list-style-type: none"> • Sources of income to pay upcoming retirement shortfalls • Make sure we aren't overdeveloping retail • Financial stability • Economic development Foothill Boulevard big box retail decline • Bring business the community desires keep out those residents don't desire • Growth vs. community needs, safe environment, protecting seniors

Activity: Opportunity Area Mapping

The second activity of the first Visioning Workshop asked participants to review large-scale maps of the City and highlight areas that need special focused attention as part of the General Plan Update, including areas that should be preserved and protect and areas where land use change should be considered. Working in small groups, attendees answered the following questions and highlighted the areas on the map:

- Where are the City's key destinations or community gathering places?
- What are the greatest assets in these areas?
- Are there certain areas in the City that should be improved?
- Are new community gathering areas or focal points needed?
- Where should new land uses be located?
- Should existing land uses change?

Following an instruction guide, the small groups used colored markers to identify the following types of areas:

- **Blue** – Focus Areas (growth, preservation, revitalization, gathering places)
- **Orange** – Job Growth (business, industrial)
- **Brown** – Restaurants and Retail
- **Red** – High Density Housing
- **Green** – Agricultural, open space, habitat conservation, or rural areas
- **Black** – Public facilities and Notes

After working on the maps, each table reported-back to the entire group summarizing their key ideas. The results of the mapping activity are included in Appendix A. General themes included:

- Preserve and protect natural open space in north La Verne
- Improve restaurant and retail offerings along Foothill Boulevard and Arrow Highway
- Give special attention to development along Arrow Highway and around the new Gold Line station
- Create new multimodal connections throughout the community and improve traffic

Activity: Replication of Post-It Note Exercise at Mobile Home Community

Following the first Visioning Workshop, a Workshop attendee replicated the Assets, Challenges, and Vision Post-It Note Activity at a mobile home community. The results of that exercise are presented below.

Topic Area	Assets	Vision	Challenges
Community Culture	<ul style="list-style-type: none">• Safety• Friends• Quick response of fire rescue• Police and fire department• Safe environment• People are friendly• Well-run at all areas• Small-town safe feeling• Self-contained• Atmosphere – like it the way it is• Safe, quiet, clean• Still a small-town feel• Do not become a big city, less is best• Small town feel• Leadership that considers all ages of residents• Small town atmosphere that supports local businesses• A good Mayor who keeps our rent down• The people and how nice the City looks• Small town feels homey• Friendly and safe• Police and fire department• Safety• Everyone is neighborly• Everything is handy• Friendliness• Safety• Small-town feeling• Very lovely and friendly place to live, always feeling safe• Nice people• Caring city administration• Small town atmosphere• Slower pace of life• I like how nice the City looks, now clean everything looks• The people that live here	<ul style="list-style-type: none">• Maintain public services (police and fire)• Neighborhood events held to encourage a sense of community within each area• Continue with good work• Keep the small town feeling	<ul style="list-style-type: none">• Top police and fire protection accomplished by top pay and training• Leadership that considers all residents as current incumbents follow• Overpopulation• Overpopulation• More police protection

Topic Area	Assets	Vision	Challenges
	<ul style="list-style-type: none"> • Small town friendly feel • Clean and friendly • City has high standards • Good schools • Pleasant environment • Leadership and solvency 		
Mobility	<ul style="list-style-type: none"> • Clean streets 	<ul style="list-style-type: none"> • Better traffic control on “D” Street • More sidewalks • New street signs • New sidewalks • Local buses for seniors • We were told a gate on Bradford would not be used and it is and young people drive fast and rude – u-turns have not stopped • More senior transport • Coordinate traffic signals for more free flow 	<ul style="list-style-type: none"> • Traffic control • Do something with traffic lights (\$\$\$) • Traffic • Bike lanes • Handicap safety • I can’t get to Bonita on the bike path / I can’t go west with my bike • Bike paths • More sidewalks • Sidewalks • Downtown parking • Sidewalks on Bradford • Foothill signals to be better timed to avoid slowing traffic • Synchronize signals on Foothill • Make all signals friendly for left turns (green arrows right away manage traffic) • New larger street signs • Parking
Housing	<ul style="list-style-type: none"> • Appreciate rent control, please keep it • Low population per mile, low density • Rent control for mobile homes • Rent control • Mobile home parks • Low density 	<ul style="list-style-type: none"> • Keep rent control • Make sure we keep rent control • Keep it simple – no more high-rise apartments • Rent control – need three members of council • Limit number of apartments and size 	<ul style="list-style-type: none"> • Keep rent control • Need for subsidized housing for physically disabled adults over 55 years of age • Concern about selling mobile homes and rent control • Don’t change the zoning for Casitas La Verne • Keep rent control
Open Space	<ul style="list-style-type: none"> • 	<ul style="list-style-type: none"> • More free community classes for seniors or anyone • More parks or recreation areas • More parks for families • More senior programs • More senior programs • Park at end of Williams Avenue • More senior programs 	<ul style="list-style-type: none"> • What is going to happen to all the senior parks La Verne has been known for

Topic Area	Assets	Vision	Challenges
Economic Development	<ul style="list-style-type: none"> Great businesses in La Verne, I never have to go far Accessibility of business Great restaurant area Variety of shops and restaurants Everything we need is nearby Stores are located close by Lots of doctors etc. also close by Nice to have the police department, auto club, shoe repair, etc. all close with easy access Many good shops and restaurants nearby All shopping easy access (or nearby) Financially sound 	<ul style="list-style-type: none"> More restaurants Better restaurants Good American food sit-down restaurant Too many fast food – need one nice restaurant More senior-friendly businesses (less young people only) 	<ul style="list-style-type: none"> Balanced budget Too many massage parlors More American restaurants – too many Asian

Visioning Workshop #2 (10/19/17): Guiding Principles, Vision Statement, and Placemaking

The second Visioning Workshop, held on Thursday October 19th, 2017 at the La Verne Community Center, focused on three major topics: establishing a set of guiding principles, crafting a vision statement for La Verne, and exploring opportunities to enhance placemaking throughout the community. Approximately 50 people attended this workshop, including several that also attended the first Workshop in September.

Activity: Guiding Principles

The first activity of the second Visioning Workshop was an individual activity where participants were asked to vote for their top three choices for “guiding principles” from a list developed based on the feedback received at the first Visioning Workshop. Participants were provided three “dot” stickers and asked to review a list of 14 possible guiding principles and stick their “dot” next to the principle they vote for. Participants could assign all three dots to the same principle or divide the dots as they preferred. The results of this activity, starting with the principle that received the most votes, is provided below.

General Plan Guiding Principles	Votes (Ordered)
Maintain safe and quiet small-town atmosphere	12
Increase alternative transportation opportunities in La Verne and to surrounding areas including adding additional bike lanes and trails	9
Attract and retain businesses and industries that provide high-quality and high-tech jobs	8
Attract new shopping and dining options	6
Expand access to open space areas	5
Limit growth in northern La Verne	5
Find ways to improve traffic congestion	4
Focus new development along the community’s major corridors (Foothill, Arrow, etc.)	4
Expand housing choices for people of all ages and incomes	2
Encourage more sustainable development	2
Improve the look of La Verne’s older neighborhoods	2
Improve access to retail businesses in La Verne	2
Promote community diversity, culture, and historic resources to enhance civic pride	1
Improve synergy between the City and the University of La Verne	1

Activity: Vision Statement

The second activity at the second Workshop addressed the need to craft a long-term Vision Statement. A Vision Statement is a description of what La Verne wants to become through the implementation of the General Plan. It provides a sense of purpose and mission for the General Plan, and sets the tone for the Plan's guiding principles to aid in the development of goals, policies and actions that will guide development in the coming years. Participants were presented with a range of sample Vision Statements from other communities around California, and working in small groups, each table was tasked with developing a brief Vision Statement for La Verne. Below are the results of this activity.

- La Verne is a safe and livable community with quiet, diverse neighborhoods where raising a family is the focus. It has accessible open spaces, safe places to live, work and play, and quality educational opportunities. It has a thriving historical downtown for retail and dining. A balance of multi-generational residents which promotes a special social interaction. Centralized location and access to major southern California destinations.
- A city that responds and honors its past through thoughtful development that maintains its historic character.
- La Verne...an adaptive, traditional community with a small-town feel. Close knit. Community events. Great schools and programs. Community pride.
- Maintain high-level vibrant, small-town atmosphere, safe environment. Bicycle and pedestrian friendly town. Strong sense of belonging for its residents. Historical values, art.
- La Verne – a community where people of all ages live harmoniously with strong public safety organizations, healthy high-quality/high-tech organizations support a robust local economy.
- In 2038, La Verne continues to maintain a small-town atmosphere and a cooperative sense of community. Taxes are kept low by industries in touch with today's new technology and ideas. Pleasant and quiet atmosphere with beautiful streets and maintained homes both new and old preserving the history of days yore. Families come together.
- La Verne will remain a clean safe city with a small-town atmosphere. A town where young families come to establish themselves as well as retirees to live out their golden years. Served by well-operated police and fire departments, the City is attractive to small and large businesses alike. Home to one of American's top ten universities and top-rated schools.
- A safe quiet rural city that has good schools and a stable housing community that is focused on maintaining a community culture that values/respects its past through thoughtful development of its historic character, business/property owners who are involved in the community.
- Safe quiet neighborhoods with reasonable height limits and carefully planned density. Attractive environmentally sensitive landscaping with more trees. Traffic calming measures that encourage pedestrian, bicycle, and public transit use. Easy access to open space in cooperation with neighboring cities.
- La Verne is a highly desirable community to live, learn, work, and recreate a safe and quiet small-town atmosphere while maturing into an attractive, vibrant, and sustainable community. La Verne retains the quaint downtown with opportunity for growth through alternative transportation and public transportation.
- La Verne is a highly desirable community to live for people of all ages and income. It strives to maintain the small-town feel while maturing into a city that attracts and retains high-quality jobs. La Verne continues to prioritize public safety to maintain the small-town feel. La Verne provides a strong sense of belonging for its residents.

Activity: Placemaking in La Verne

The third activity of the second Visioning Workshop expanded on the mapping exercise conducted at the first workshop and asked additional questions focused on placemaking in La Verne. Placemaking is a people-centered approach to the planning, design, and management of the spaces that comprise gathering places in a community, including streets, sidewalks, parks, buildings, and other public or private spaces. The goal is to promote interaction between people and foster healthier, more social and economically viable communities.

As part of the overview presentation, participants were presented with examples of “placemaking in action” and discussed how sociability, uses and activities, access and linkages, and comfort and image make a “great place”. Participants were asked to answer the following placemaking questions for La Verne:

- What are the key landmarks within the City? How could these areas be improved?
- Where are your major activity nodes, destinations and gathering places? Where should new ones be located?
- Are there different neighborhoods/districts in La Verne?
- What are the City’s defining viewsheds?
- Which corridors or intersections need special attention?
- Where are the City’s major gateways?

Using markers and graphic symbols, small groups worked together around large-format maps of the City to answer these questions. The results of this mapping activity are presented in Appendix A. In general, the groups identified the following key features as central to placemaking in La Verne:

- Preservation of views to Marshall Canyon and the San Gabriel Mountains
- Hiking opportunities in north La Verne
- Marshall Canyon Golf Course as a node of activity
- Live Oak Reservoir as a community landmark
- Parks and recreation spaces as major activity nodes
- Community gateways at: Baseline Road and Foothill Boulevard, Bonita Avenue, Fairplex, and freeway exits – note that several groups identified gateways into the community that are actually outside La Verne, demonstrating the interconnectedness of adjacent communities
- Protect Old Town La Verne as the City’s historic core, which includes a number of landmarks and activity nodes
- Identify Brackett Field as an activity node, gateway, and landmark
- Identify Metropolitan Water District facility as a landmark which will impact land use decisions
- Identify historic and cultural resources and preserve and protect them throughout the community

Visioning Workshop #3 (11/30/17): Circulation and Mobility

The third and final Visioning Workshop was held on Thursday November 20th, 2017 at the Community Center at City Hall. Approximately 30 people attended this event. The focus of the third workshop was on circulation and mobility in La Verne, including how people get around (cars, walking, biking, transit) and regional transit connections including existing Metrolink stations at the Fairplex (seasonal) and North Pomona and a future Gold Line station in La Verne. The presentation included background on existing conditions, including existing traffic volumes, transit routes, and accident information. The group also reviewed existing commute patterns (where do people who live in La Verne go for work, and where do people who work in La Verne come from). This information is available as part of the presentation which is posted on the project website.

Complete Streets

To set the stage for a discussion of mobility in La Verne, participants learned more about the Complete Streets Act of 2008 (AB1358) which requires cities, when updating their General Plan, to ensure that local streets and roads meet the needs of all users, of all ages and abilities, including bicyclists, pedestrians, transit riders, and motorists. Streets can and will look different from each other based on their context, community preferences, types and needs of users, land use context, and functionality. Not every street needs to accommodate all types of users, but the network as a whole must address a comprehensive set of multimodal needs.

Activity: Mobility Mapping

Large-format exhibits of the City with existing transit routes mapped on the exhibit were provided to each table of participants. Following an instruction guide, the small groups used colored markers to identify the following types of mobility issues, opportunities and constraints:

- **Red** – Areas underserved by transit
- **Green** – Where bike routes should go/places you want to get to on a bike

- **Purple** – Intersections or roadways where you think there is a lot of traffic
- **Blue** – Areas you think need more parking

The results of the mapping activity are presented in Appendix A. In general, the groups identified the following key mobility issues in La Verne:

- Add bike routes along Wheeler Avenue, Baseline Road, Bonita Avenue, and D Street
- Ensure bike routes connect to open space in north La Verne and adjacent cities
- Address sever traffic along White Avenue from Baseline to the Fairplex, along Foothill (especially at Wheeler), along D Street, and near schools
- More parking needed near Ramona Middle School
- Areas underserved by transit include the industrial areas of La Verne near Brackett Field, the Fairplex, and the University of La Verne
- Improve transit options for north La Verne (potentially a local circulator if ridership does not justify expanded Foothill Transit bus routes)
- Transit connections between new Gold Line station to Old Town (potentially a trolley)
- Add bike racks at major activity nodes and destinations
- Increase handicap parking at school sites and in Old Town
- Improve flow of busses (improve traffic congestion)
- Reduce “pass-through” traffic from drivers using La Verne’s streets to cut through the community
- Create multimodal connections to Gilead, including bike routes and transit connections

Activity: Let’s Design Our Streets!

Understanding the need to design a mobility network for all types of users, this activity asked participants to work in small groups to reimagine the configuration of some of La Verne’s major streets. Working in small groups, each group was assigned one of the following streets (Baseline, Bonita, Foothill, Wheeler, or White) and provided information on its typical existing configuration: how many lanes and how wide the lanes are, if there’s on-street parking, bike facilities, etc. Then, using a set of magnetic “puzzle pieces” the small groups worked together to design what types of facilities (travel lanes, bike lanes, parking, landscaping, medians, etc.) should make-up their assigned street section. Following the activity, groups reported back on their ideas. The results of this activity are included in Appendix B.

Collectively, all groups found that travel lanes should be the minimum width for safe and efficient motorist travel and, where travel lanes could be narrowed, new bikeways, medians, landscaped parkways, and/or parking should be added. The descriptions below summarize the existing and “reimagined” street configurations:

Roadway	Existing Features	Proposed Features
Baseline Road	<ul style="list-style-type: none"> • Two travel lanes in both directions (12’ to 14’ wide) • 14’ wide painted median • On-street parking on both sides • Sidewalk on both sides 	<ul style="list-style-type: none"> • Prioritize automobile travel • Reduced median width • As many additional travel lanes in both directions to the extent feasible
Bonita Avenue	<ul style="list-style-type: none"> • One 18’ travel lane in both directions • On-street parking on both sides • Landscaped parkway on both sides • Sidewalk on both sides 	<ul style="list-style-type: none"> • Prioritize pedestrians and bicyclists • New 28’ wide greenbelt median to accommodate walkers, bikers, and landscaping • Reduced travel lanes to minimum appropriate width • Maintain curb-adjacent landscape buffer on both sides • Protect sidewalk with a vertical buffer between sidewalk and landscape area

		<ul style="list-style-type: none"> • Extend Bonita greenbelt to Claremont
Foothill Boulevard	<ul style="list-style-type: none"> • Three travel lanes in one direction (11' to 12' wide) and two travel lanes in the other direction (12' wide and 22' wide) • 16' wide landscaped median • Sidewalk on both sides 	<ul style="list-style-type: none"> • Safely accommodate motorists, bicyclists, and pedestrians • Provide only two travel lanes in each direction at the minimum appropriate width • Maintain landscaped median • Incorporate a bike lane and maintain a sidewalk on one side • Create a shared-use pedestrian and bicycle path on the opposite side
Wheeler Avenue	<ul style="list-style-type: none"> • Two travel lanes in both directions (12' to 14' wide) • 16' wide painted median • On-street parking on both sides • Sidewalk on both sides 	<ul style="list-style-type: none"> • Reduce the widths of existing facilities to the minimum appropriate width to recreate space to accommodate bicyclists and pedestrians • Maintain two travel lanes in both directions • Incorporate 2-way bike lane on one side of the street, protected from the travel lane with a marked or gravel shoulder • Maintain median/central turn lane • Maintain on-street parking on both sides of the street • Maintain sidewalk on both sides
White Avenue	<ul style="list-style-type: none"> • Two travel lanes in both directions (11' to 14' wide) • 14' wide painted median • On-street parking on both sides • Sidewalk on both sides 	<ul style="list-style-type: none"> • Maintain two travel lanes in both directions but reduce widths to minimum amount appropriate • Maintain median but reduce width • Provide a bike lane on both sides, between the travel lane and on-street parking • Maintain on-street parking on both sides • Maintain sidewalks on both sides

NEXT STEPS






The goal of the Visioning Workshops was to start a conversation with the La Verne community regarding their vision for the City and how the General Plan should address the issues, opportunities, and challenges that are most important to La Verne. Using this feedback, City Staff, the consultant team, and the City's General Plan Advisory Committee will continue to evaluate priorities and develop goals, policies, and actions that best reflect the community's vision for the future.

APPENDIX A: SCANS OF MAPPING EXERCISES

Visioning Workshop #1 Land Use Opportunity Map Activity Instructions

- **Blue** – Focus Areas (growth, preservation, revitalization, gathering places)
- **Orange** – Job Growth (business, industrial)
- **Brown** – Restaurants and Retail
- **Red** – High Density Housing
- **Green** –Agricultural, open space, habitat conservation, or rural areas
- **Black** – Public facilities and Notes

Visioning Workshop #2 Placemaking Map Activity Instructions

	Landmarks Iconic buildings, signs, monuments, places of cultural or historic significance
	Activity Nodes Key destinations: can be existing or future nodes
	Gateways Key entrances into the community
	Viewsheds Views that should be preserved and protected
	Districts Existing neighborhoods or areas within the community with distinct identities

Visioning Workshop #3 Mobility Map Activity Instructions

- **RED** – Identify areas underserved by transit
- **GREEN** – Map where you think bike routes should go/places you want to get to on a bike
- **PURPLE** – Circle intersections or roadways where you think there is a lot of traffic
- **BLUE** – Circle areas that you think need more parking

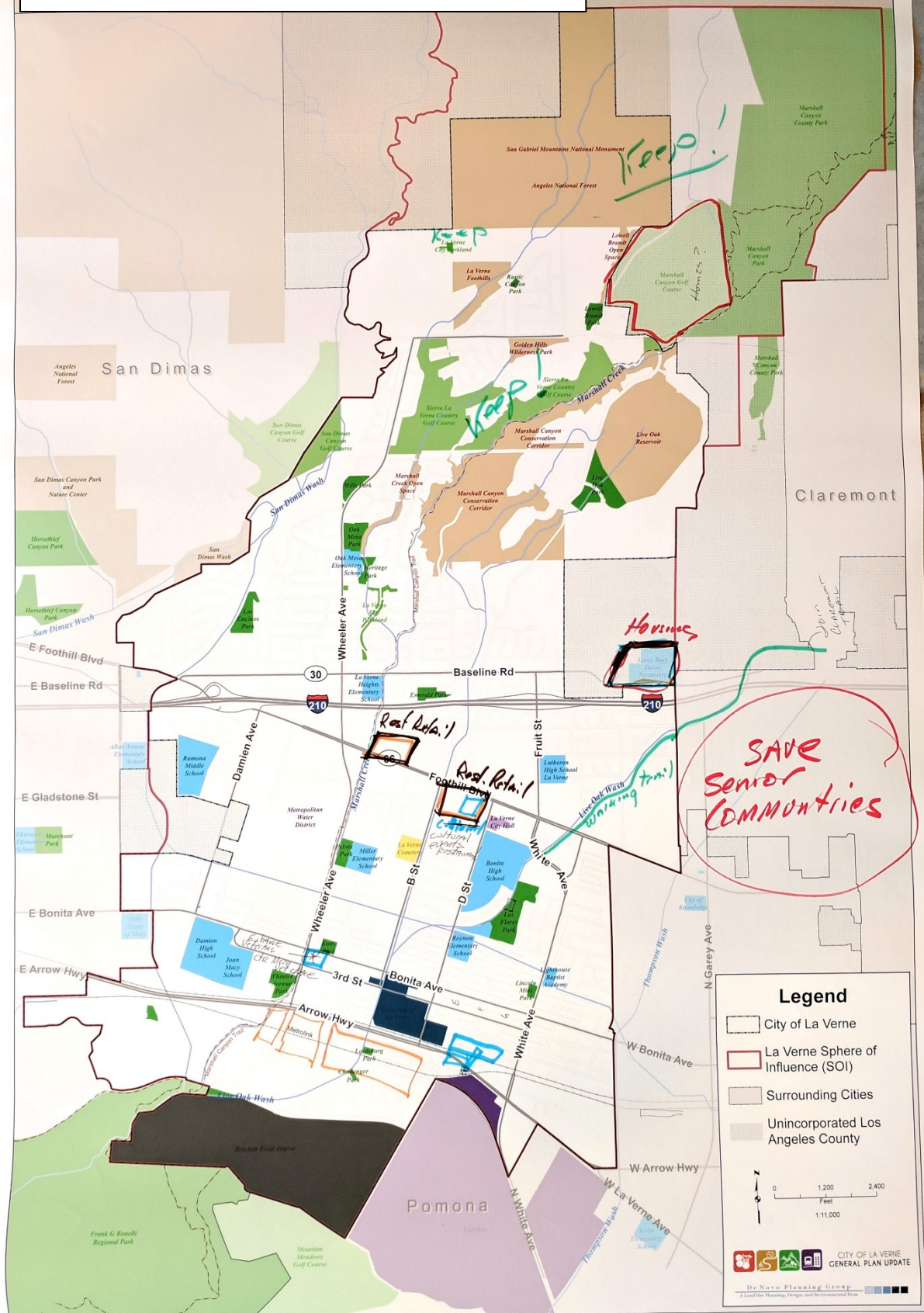
Visioning Workshop #1: Land Use Mapping Exercise (Table 1)



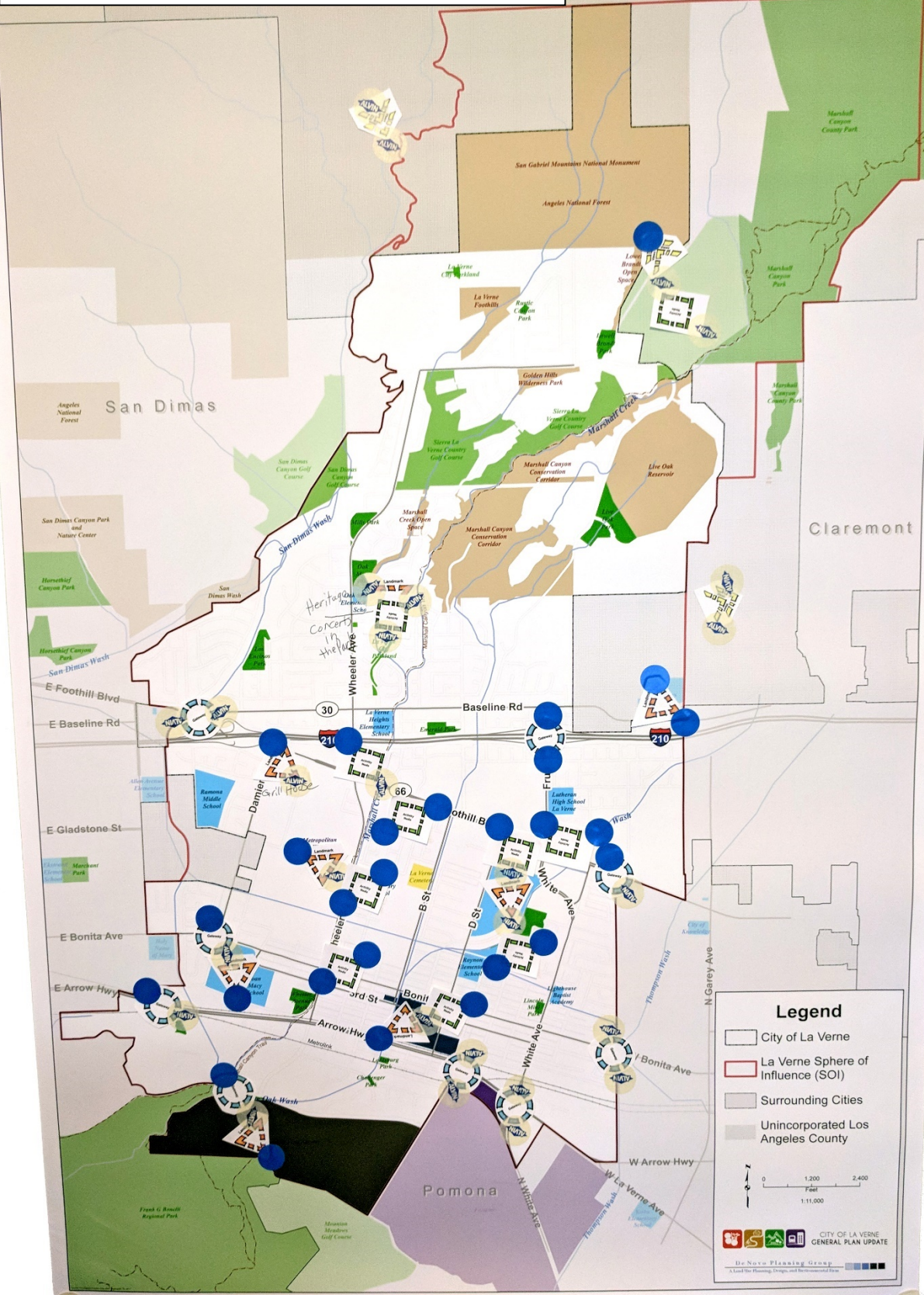
Visioning Workshop #1: Land Use Mapping Exercise (Table 2)



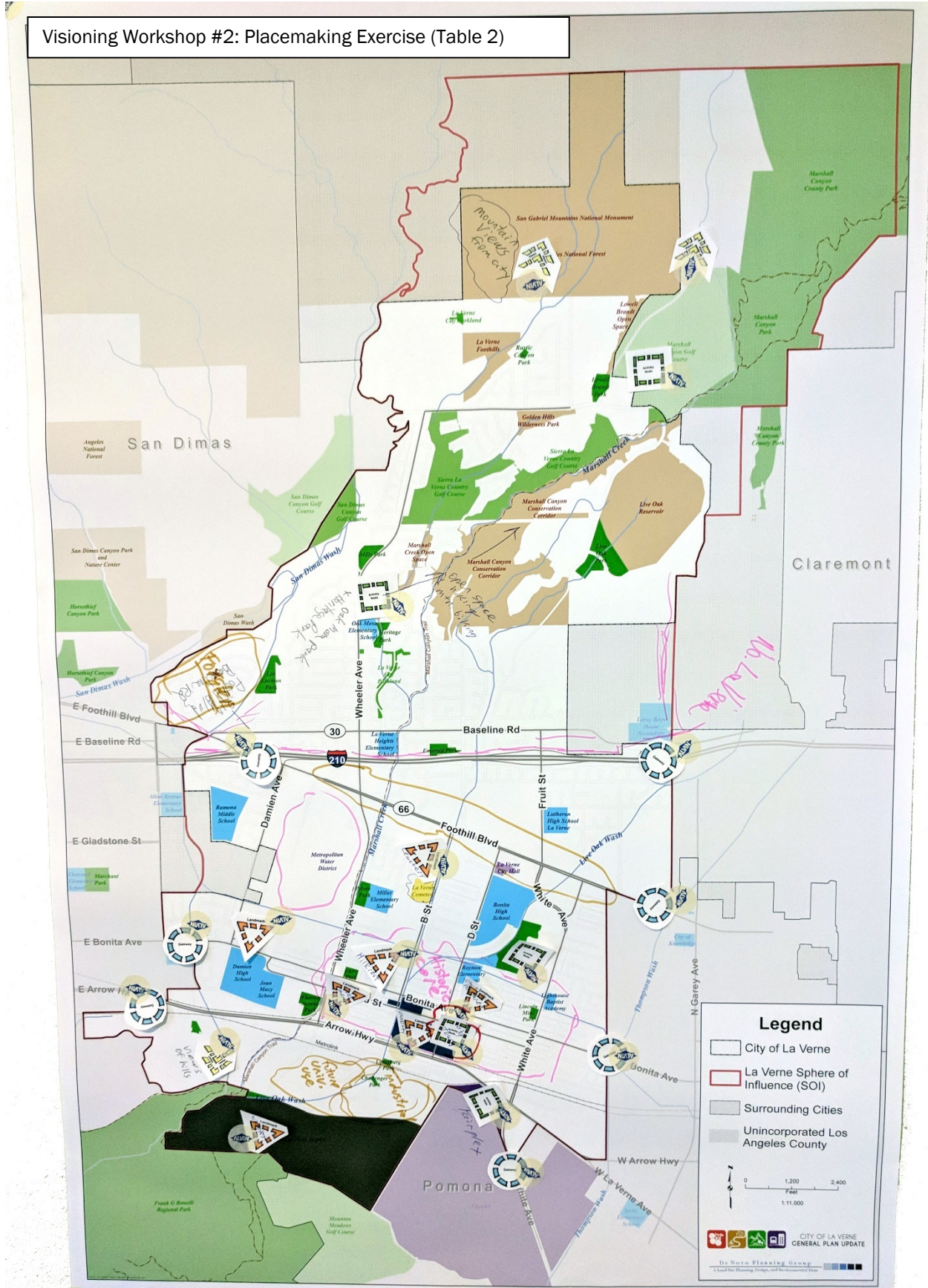
Visioning Workshop #1: Land Use Mapping Exercise (Table 3)



Visioning Workshop #2: Placemaking Exercise (Table 1)



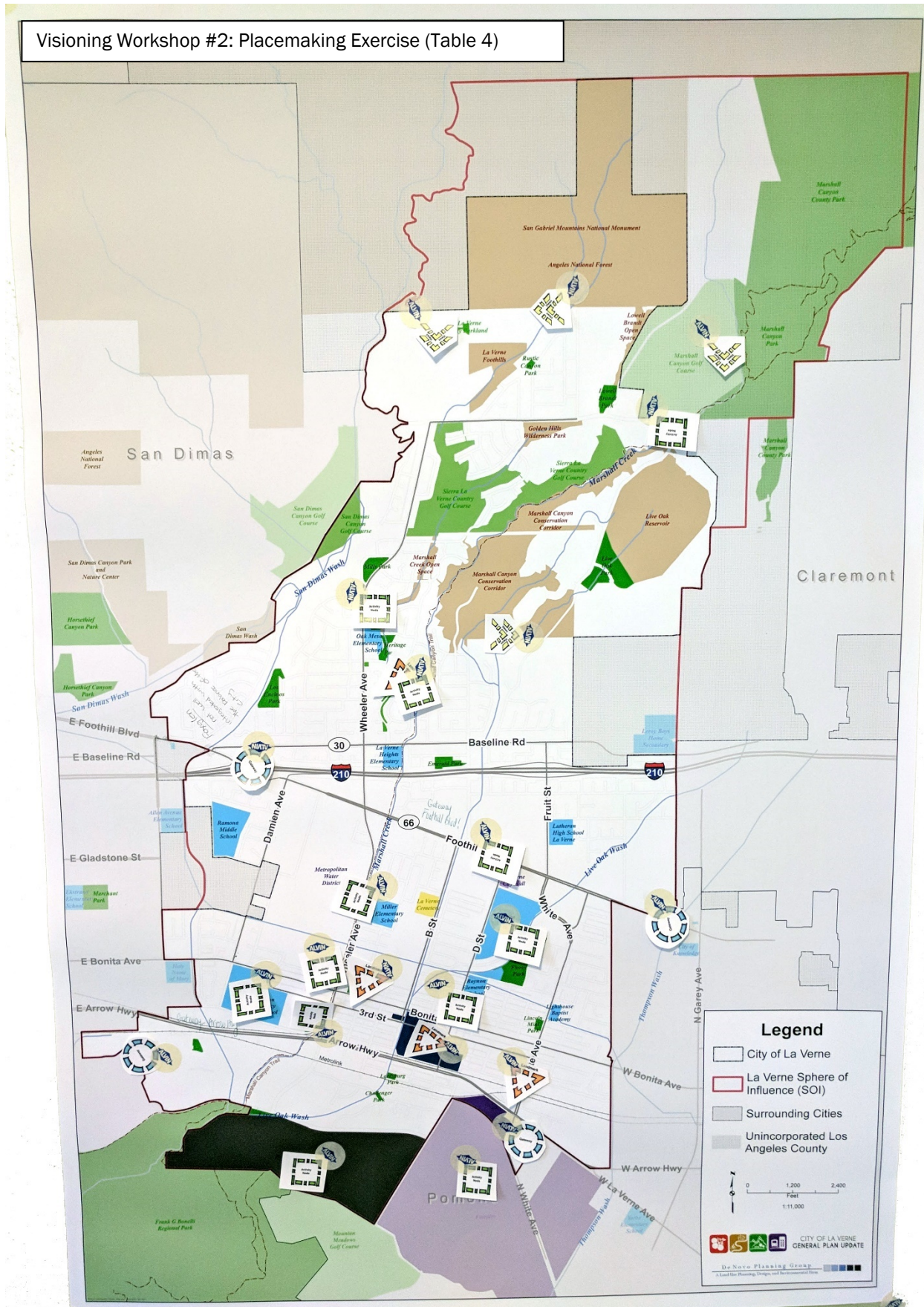
Visioning Workshop #2: Placemaking Exercise (Table 2)



Visioning Workshop #2: Placemaking Exercise (Table 3)

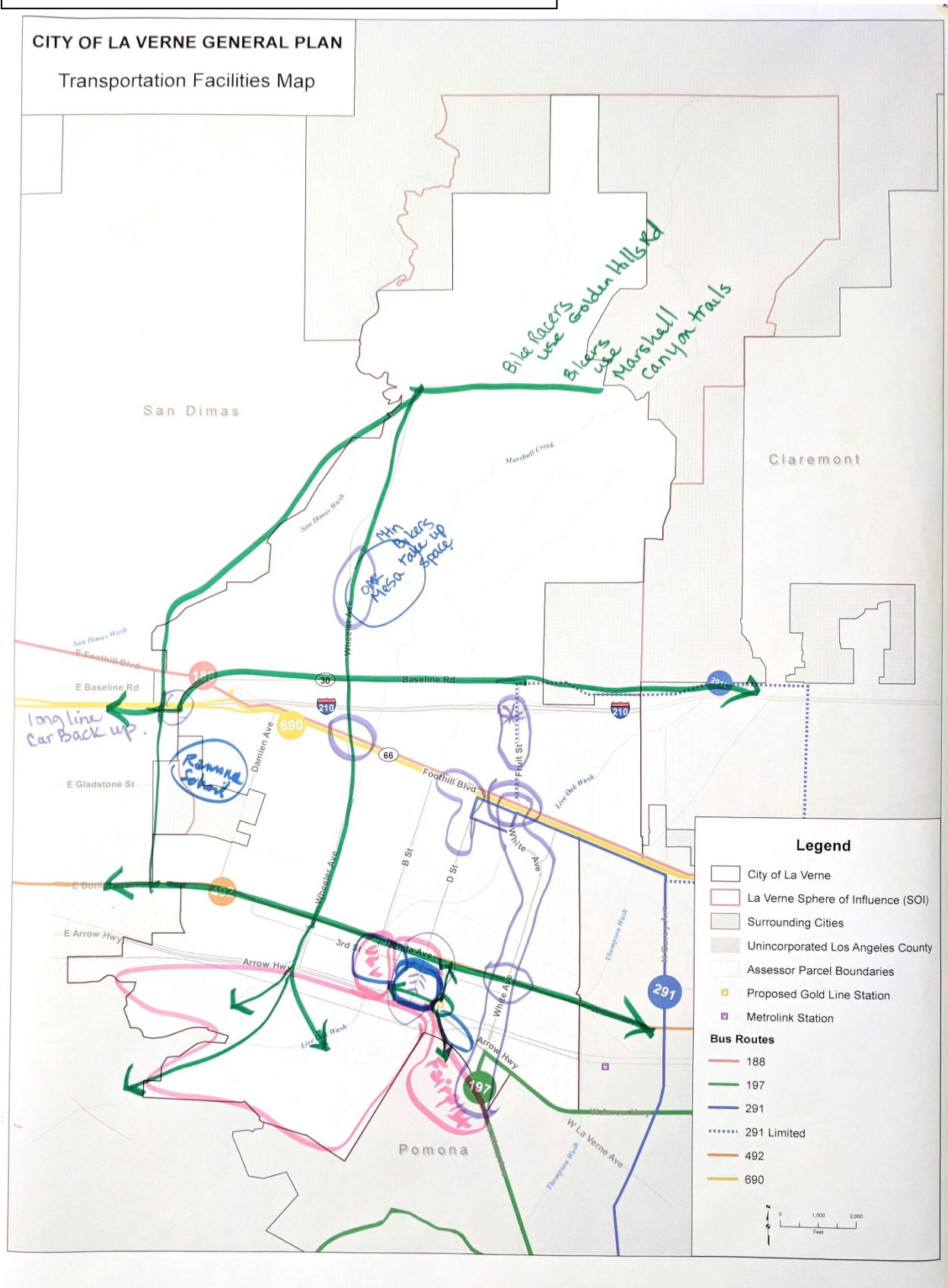


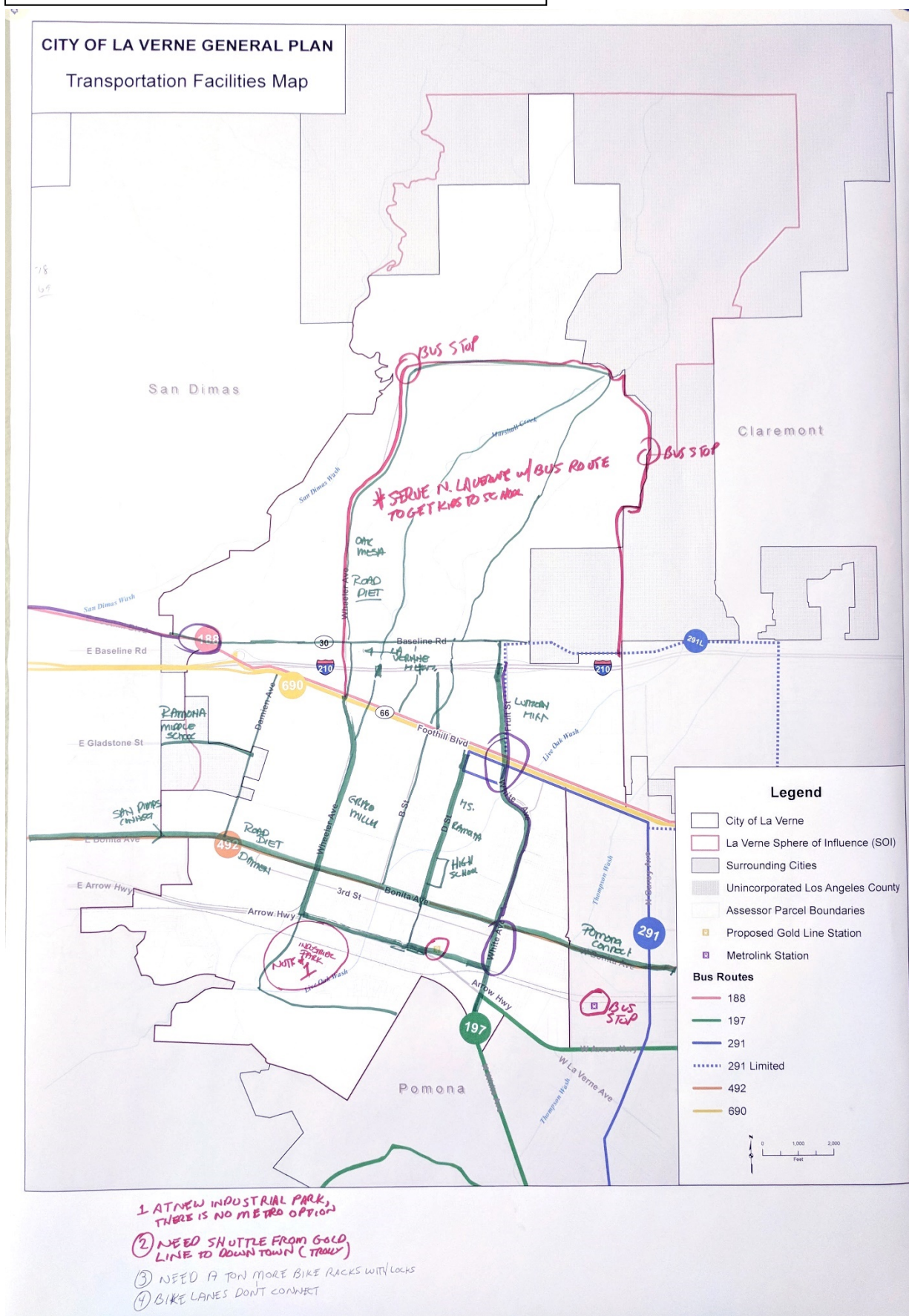
Visioning Workshop #2: Placemaking Exercise (Table 4)

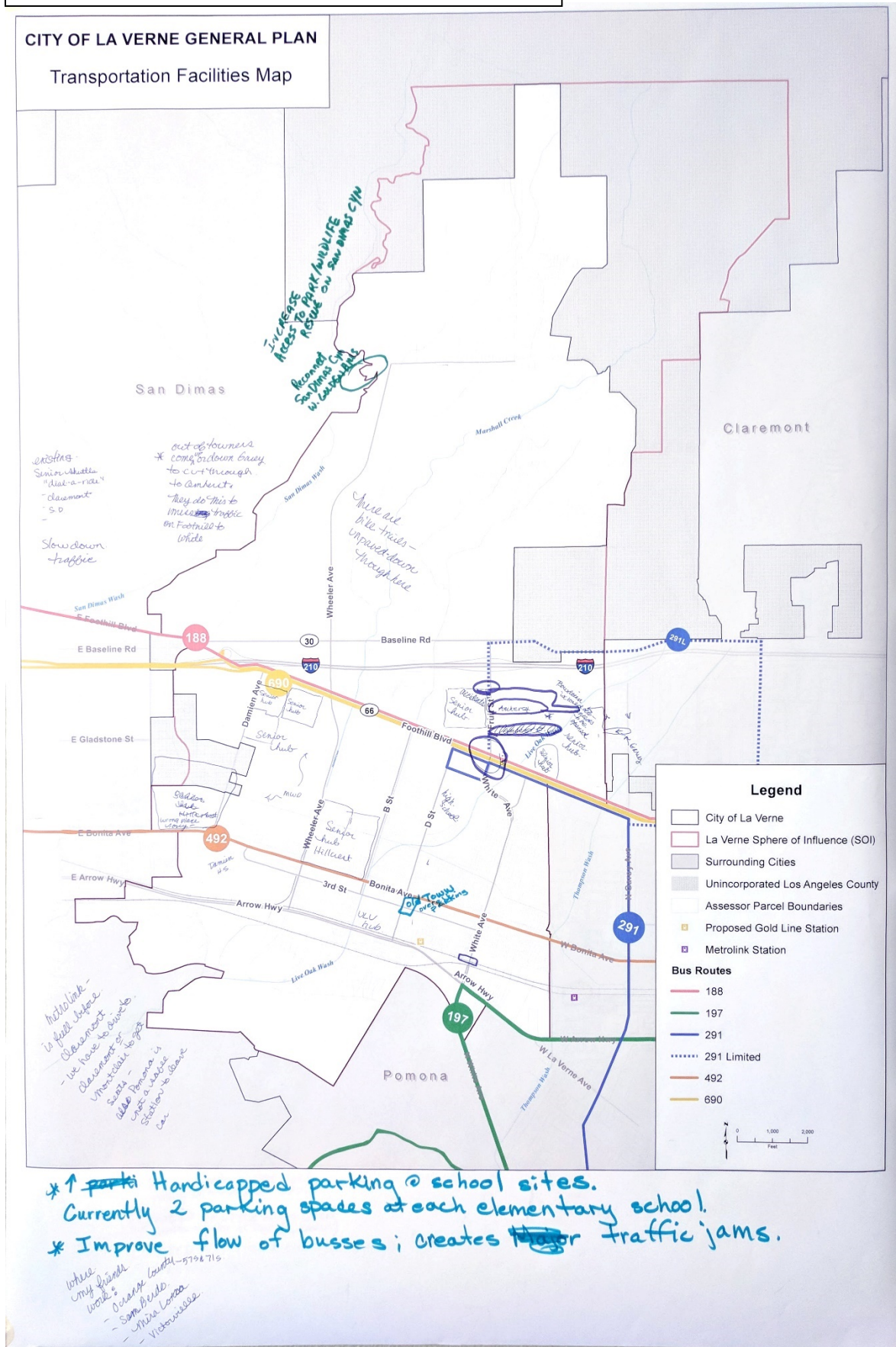


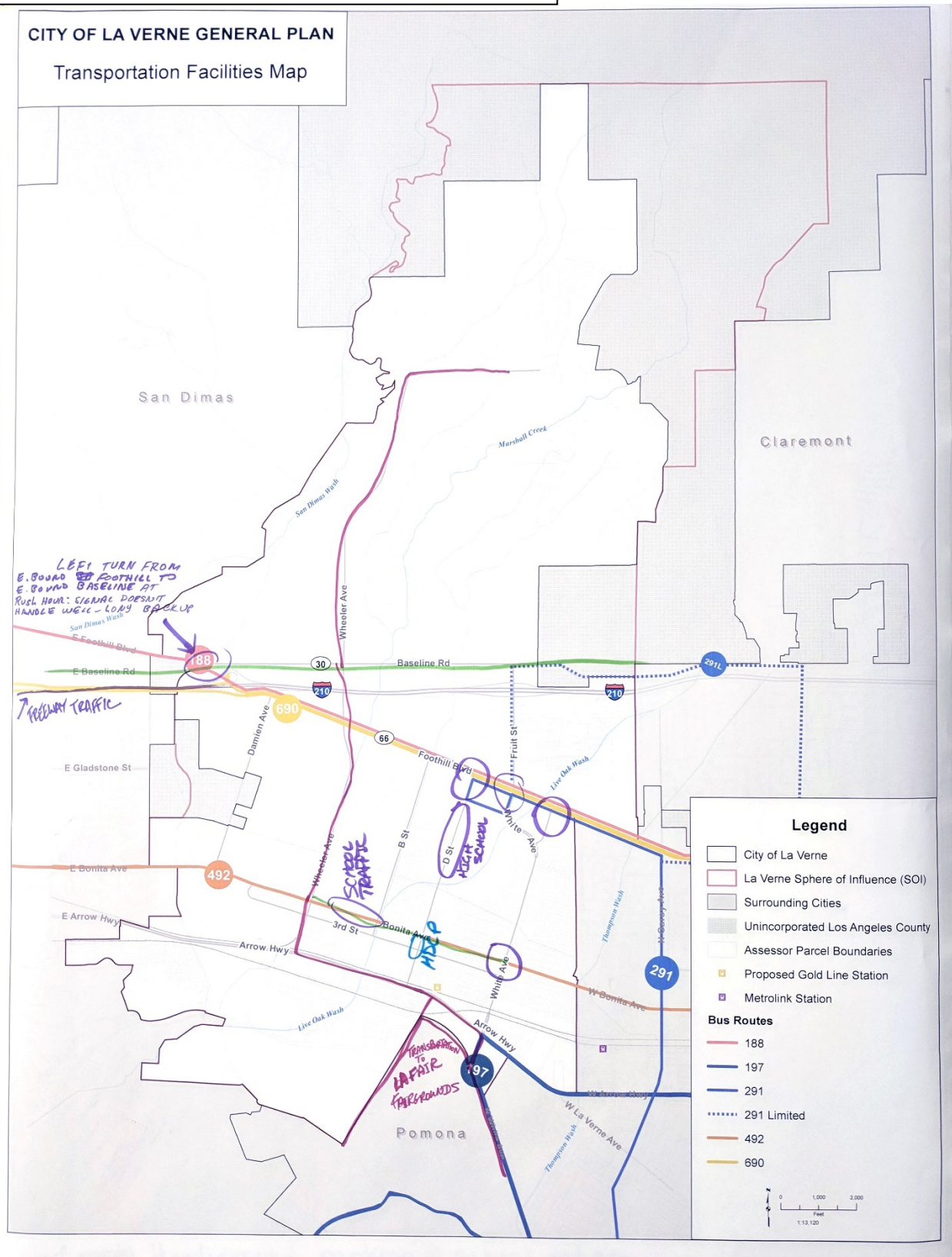
Visioning Workshop #2: Placemaking Exercise (Table 5)



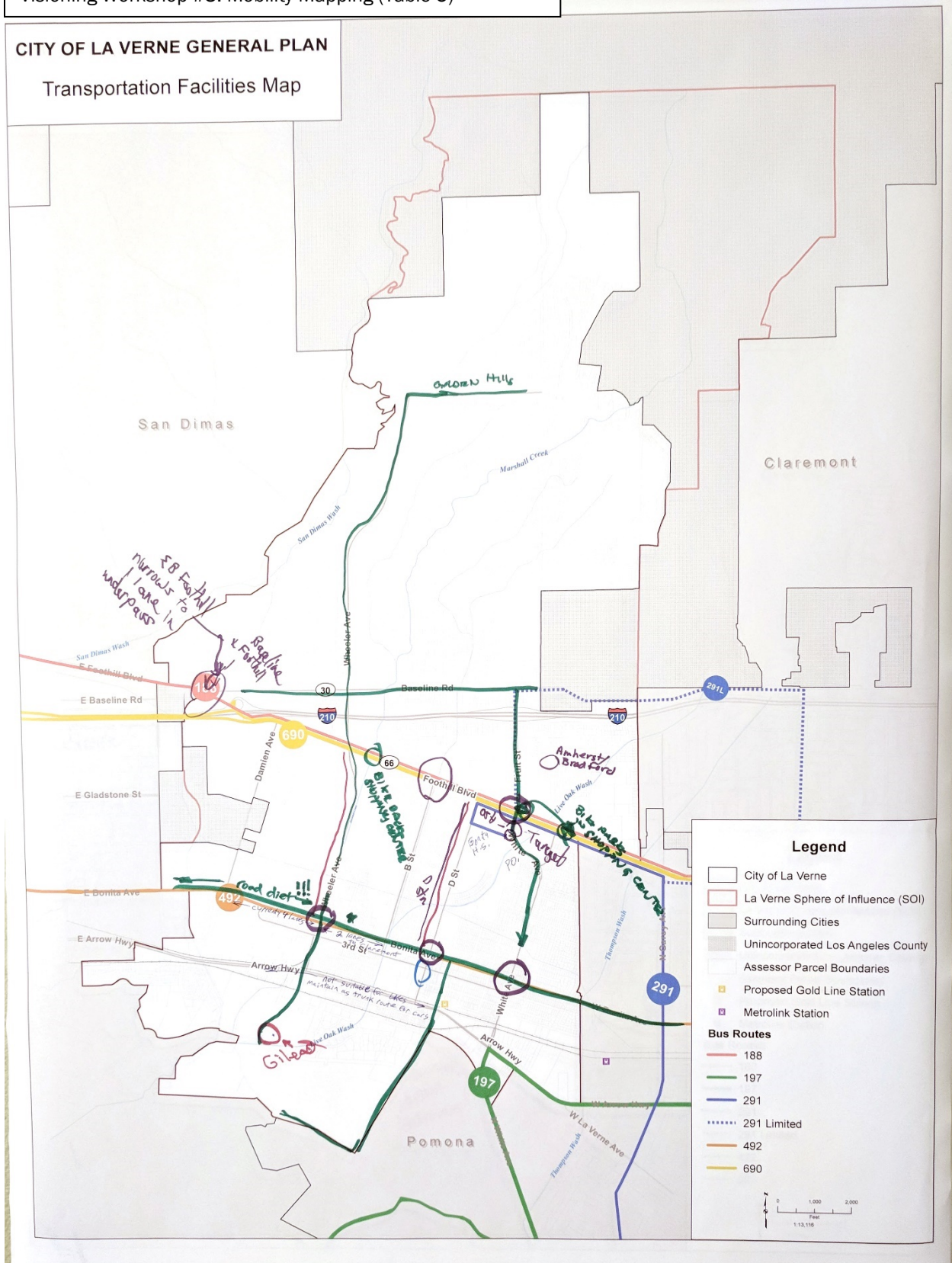








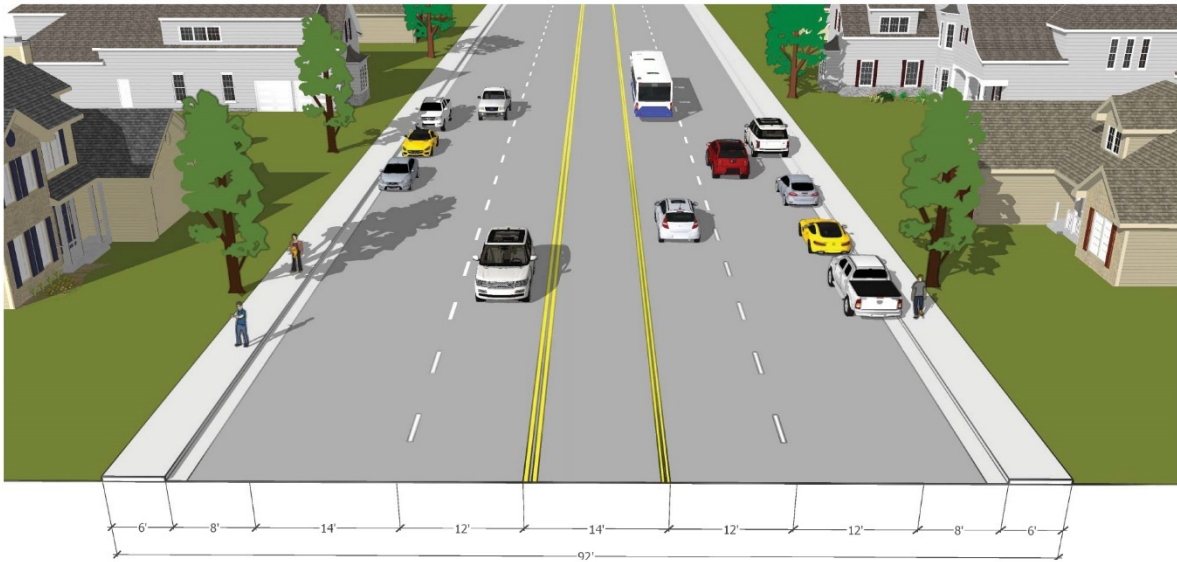
CITY OF LA VERNE GENERAL PLAN
Transportation Facilities Map



APPENDIX B: ROADWAY CONFIGURATIONS WORKSHOP #3 ACTIVITY

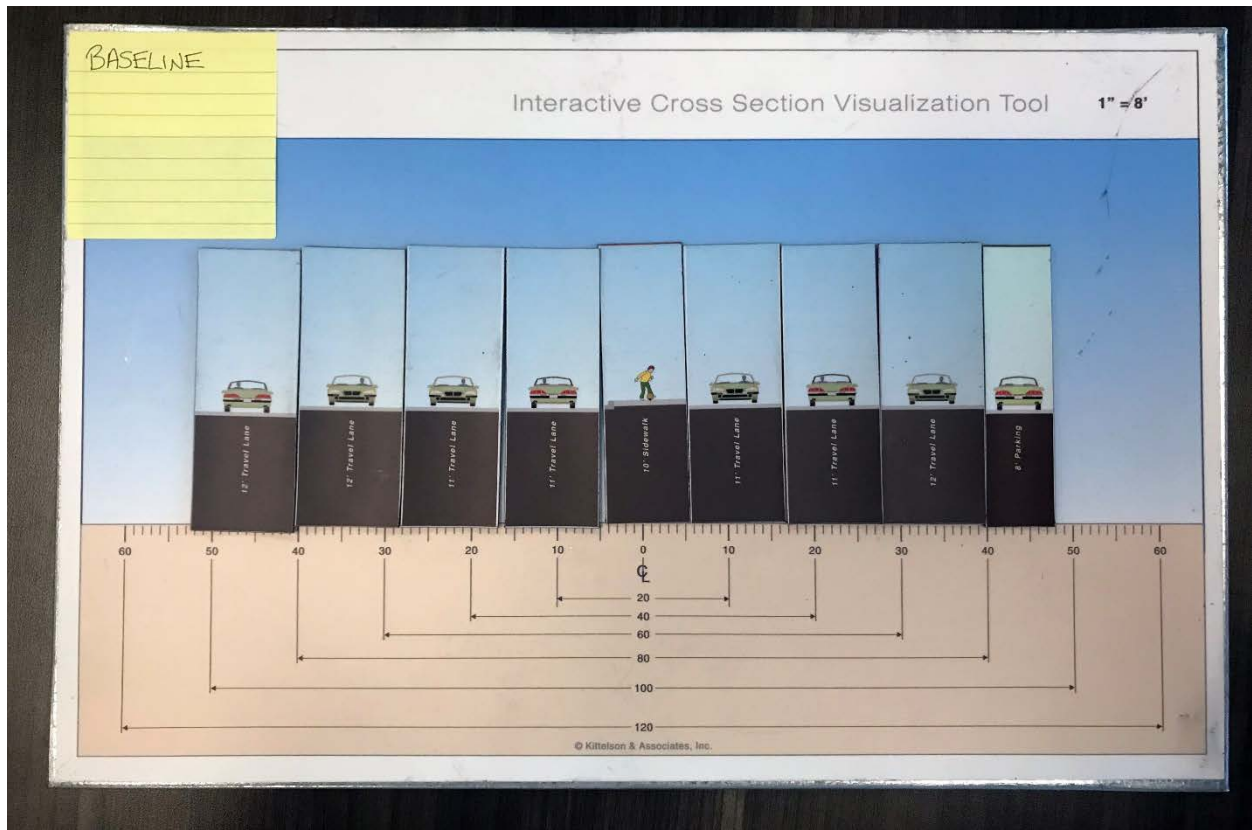


Baseline Existing Configuration

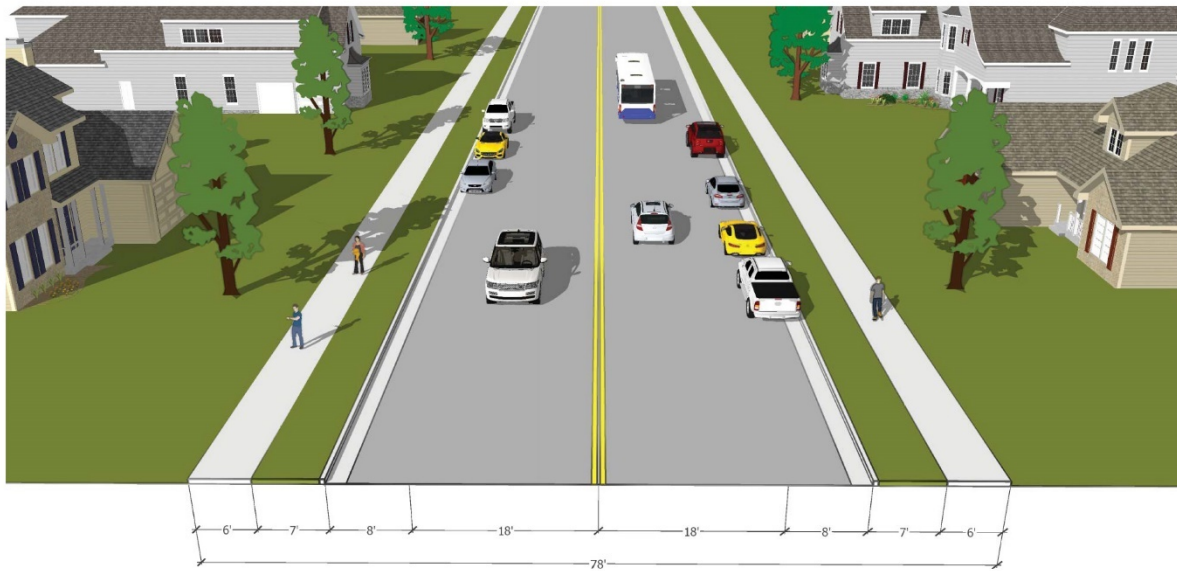


**BASELINE ROAD BETWEEN CATALINA AVENUE
AND WHEELER AVENUE**

Baseline Workshop Configuration

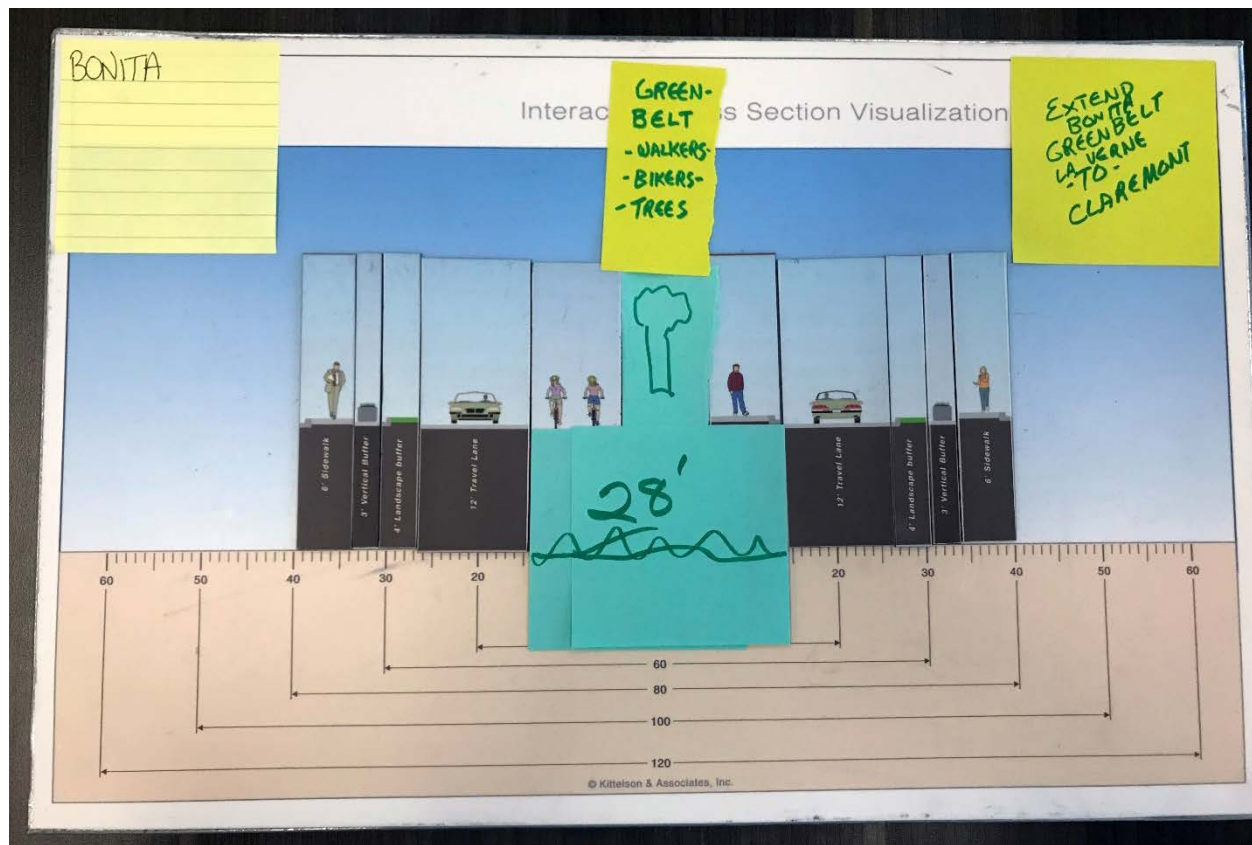


Bonita Existing Configuration

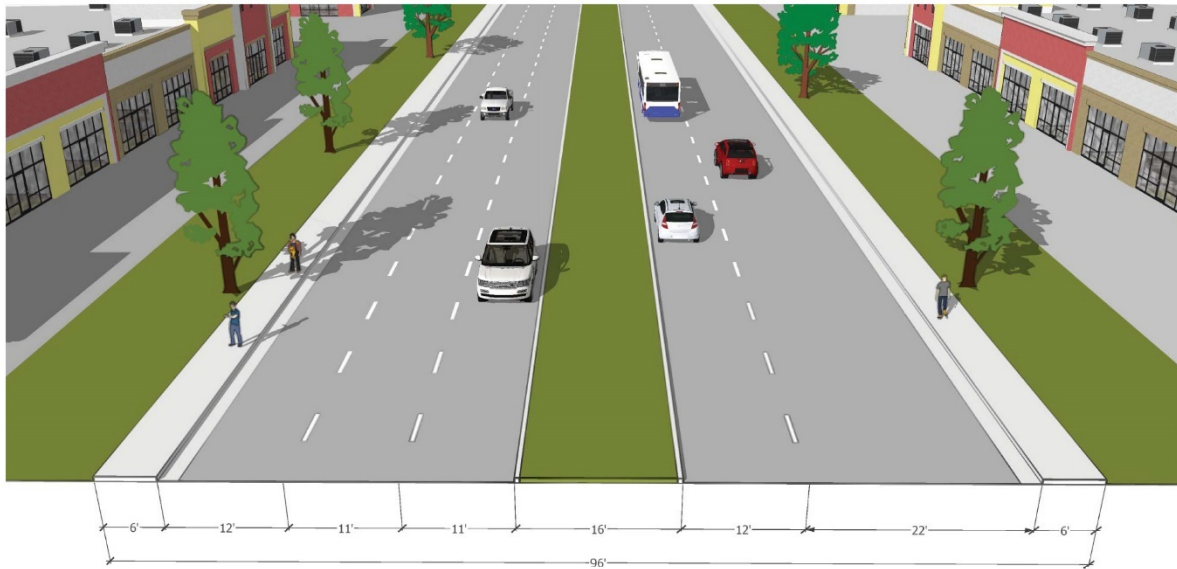


**BONITA AVENUE BETWEEN A STREET
AND PARK AVENUE**

Bonita Workshop Configuration



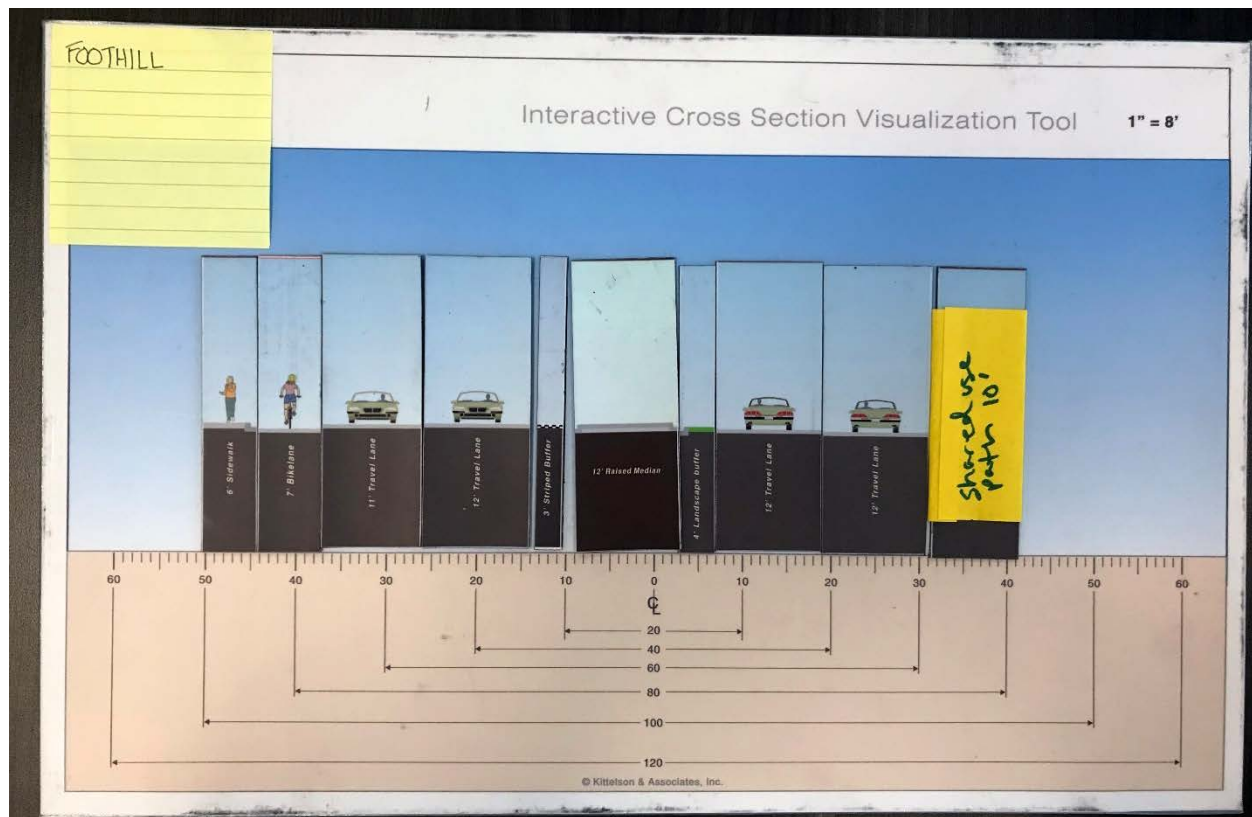
Foothill Existing Configuration



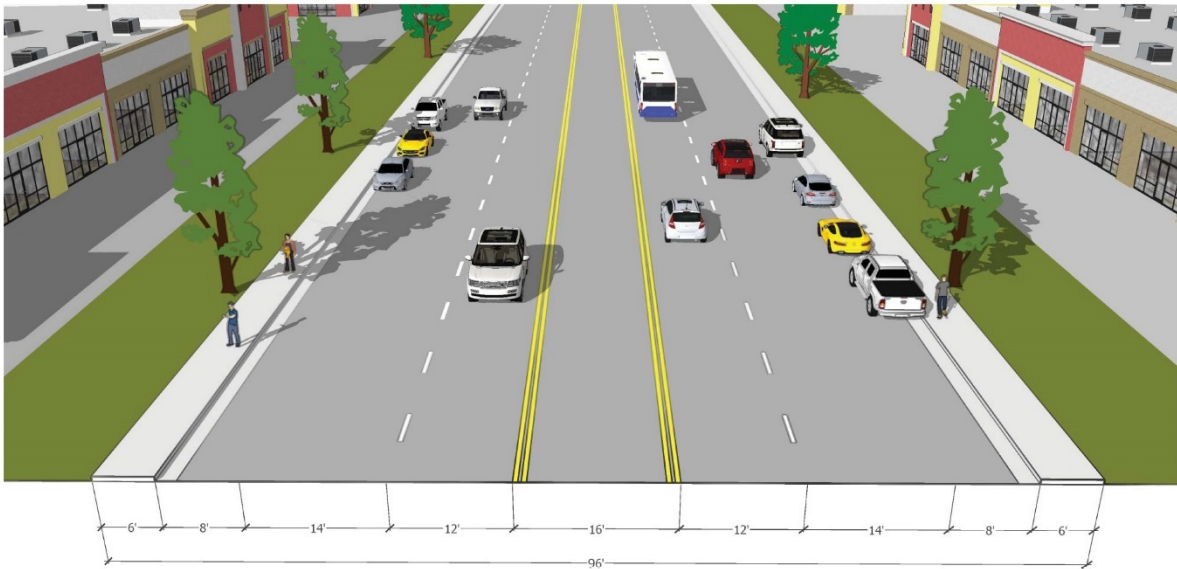
KITTELSON
& ASSOCIATES

**FOOTHILL BOULEVARD BETWEEN CHELSEA DRIVE
AND EMERALD AVENUE**

Foothill Workshop Configuration

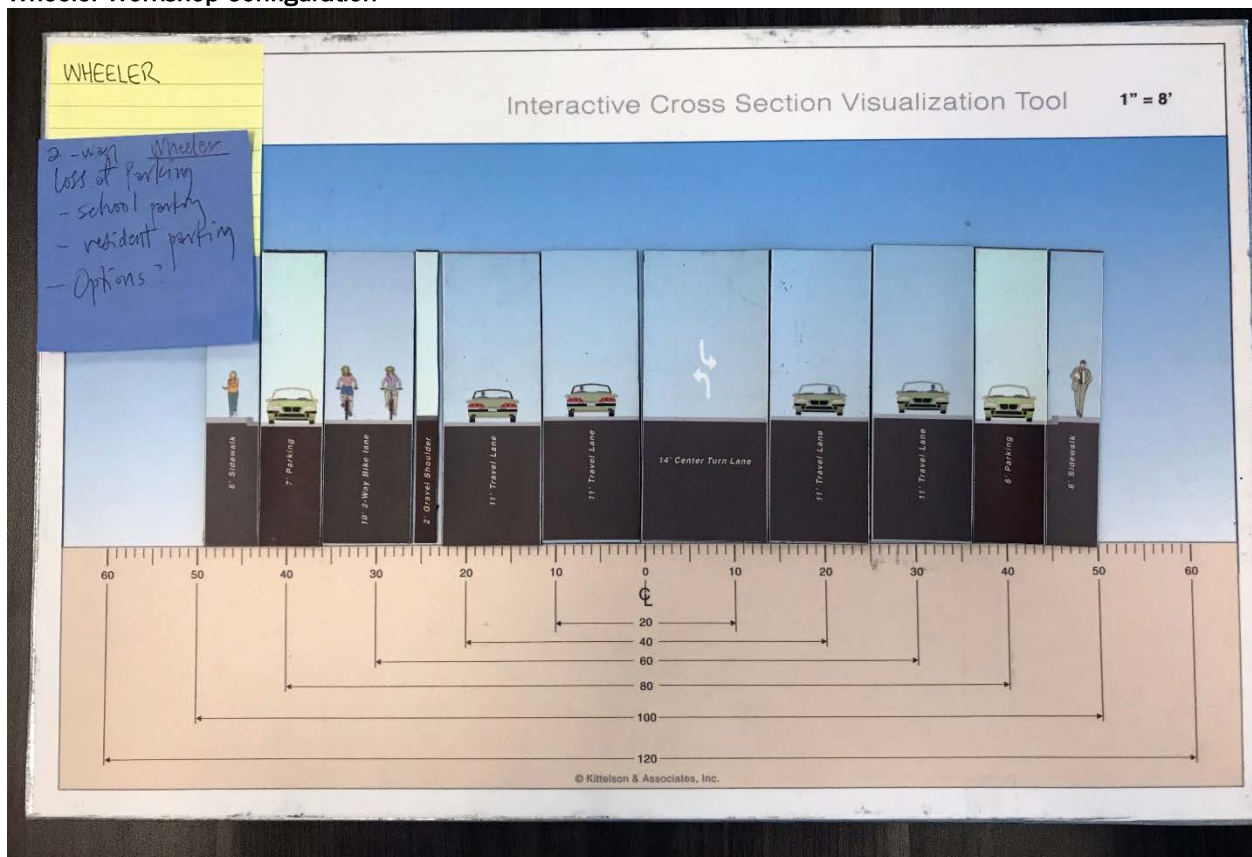


Wheeler Existing Configuration

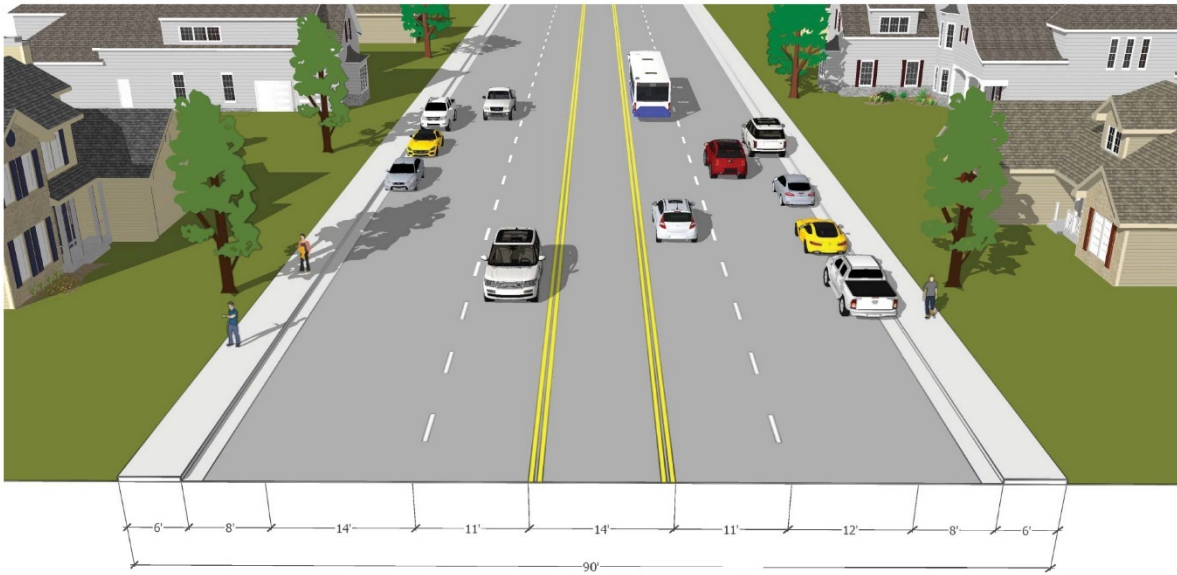


**WHEELER AVENUE BETWEEN BASELINE ROAD
AND FOOTHILL BOULEVARD**

Wheeler Workshop Configuration



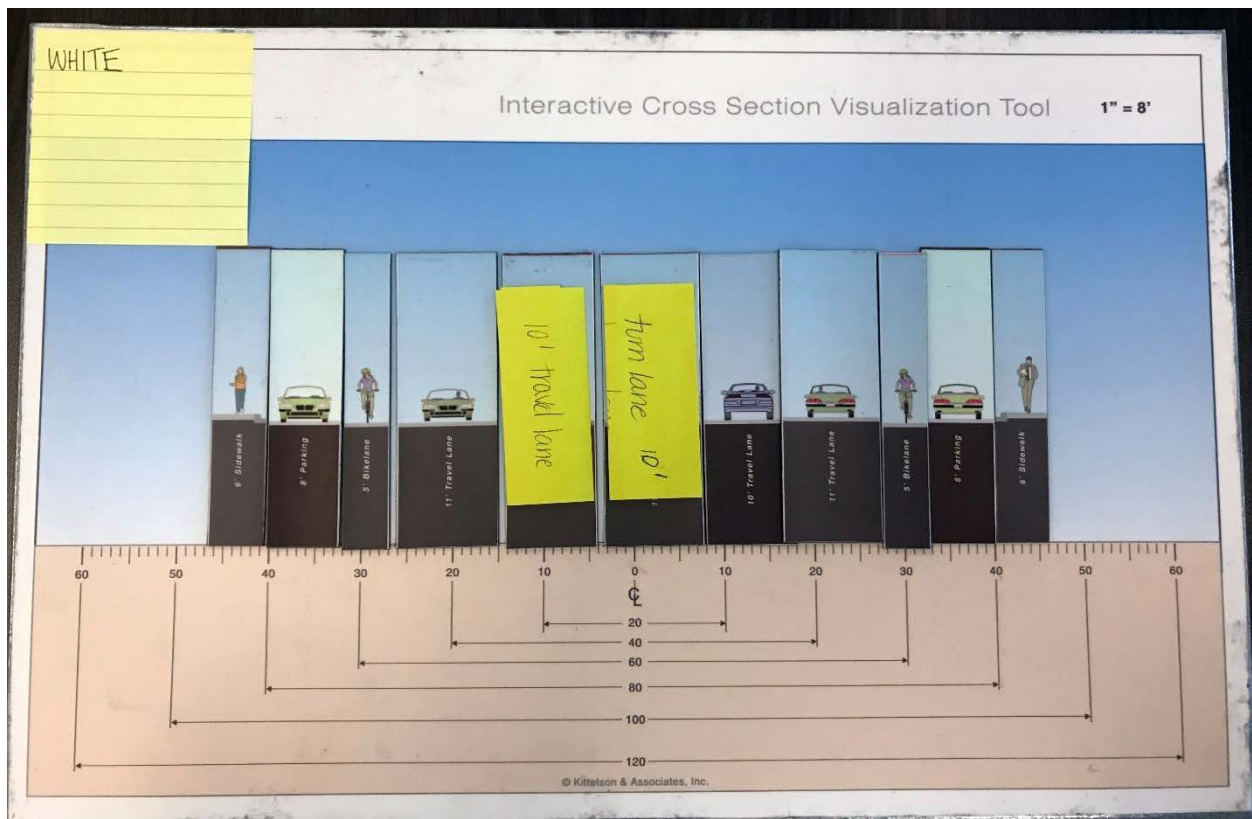
White Existing Configuration



KITTELSON
& ASSOCIATES

**WHITE AVENUE BETWEEN KENDALL STREET
AND GROVE STREET**

White Workshop Configuration



APPENDIX C: PHOTOS OF VISIONING WORKSHOPS





